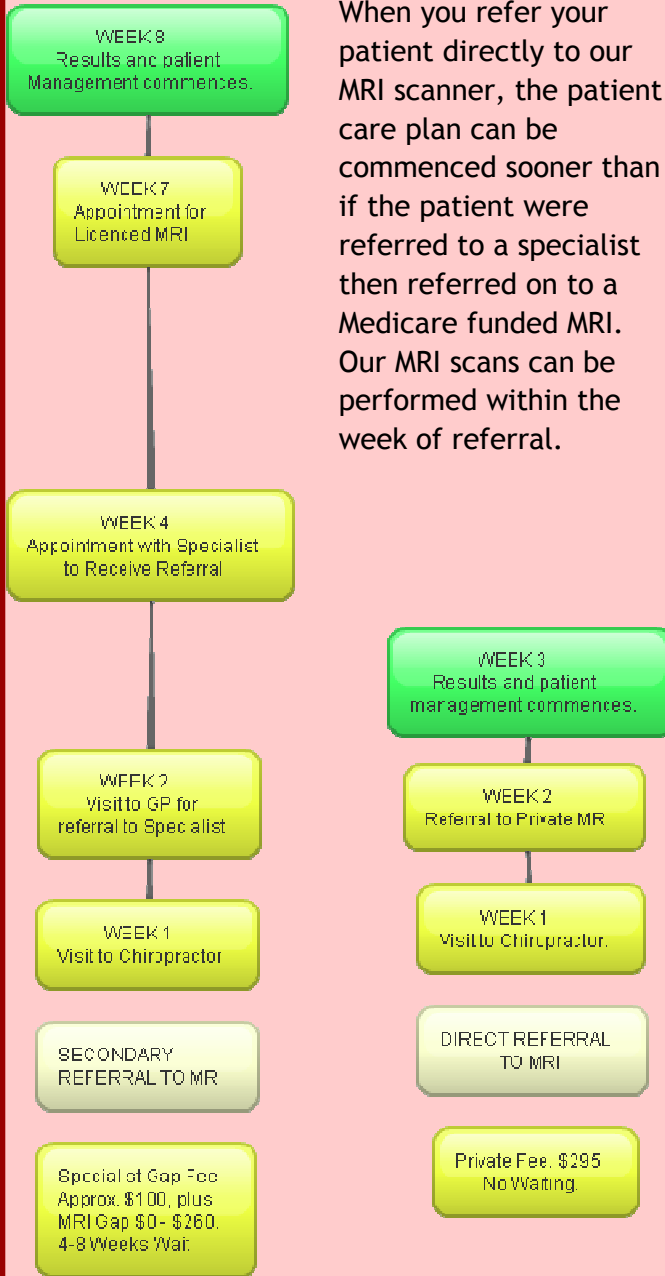


Direct referrals are **FASTER**

When you refer your patient directly to our MRI scanner, the patient care plan can be commenced sooner than if the patient were referred to a specialist then referred on to a Medicare funded MRI. Our MRI scans can be performed within the week of referral.



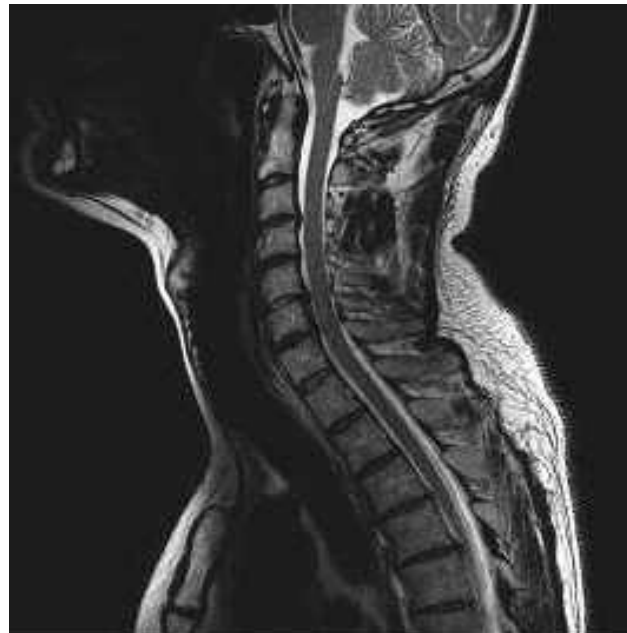
Benefits of MRI referrals

- Benefits to you, the primary care physician, and your patients access to advanced imaging
- No Ionising radiation and improved diagnostic yield with weight bearing images
- \$295 private fee
- Scans can be ordered and taken on the same day
- No need for medical specialist referral or extra costs for specialist appointment
- You can make informed decisions regarding your patients condition and treatment options



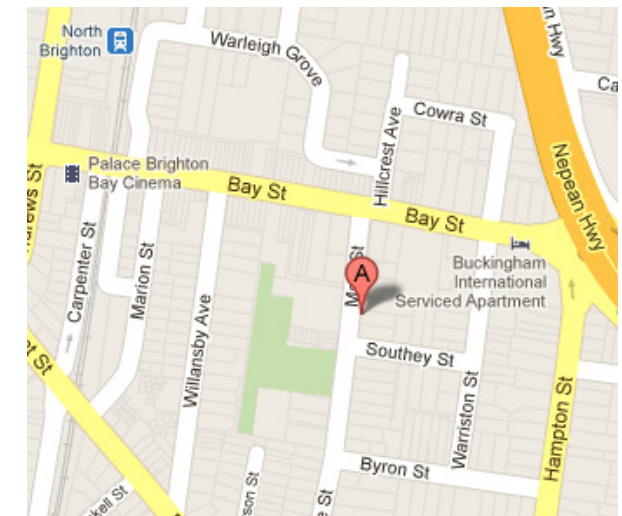
Bayside Standing MRI

A Direct MRI Referral Service



130 Male Street
Brighton 3186

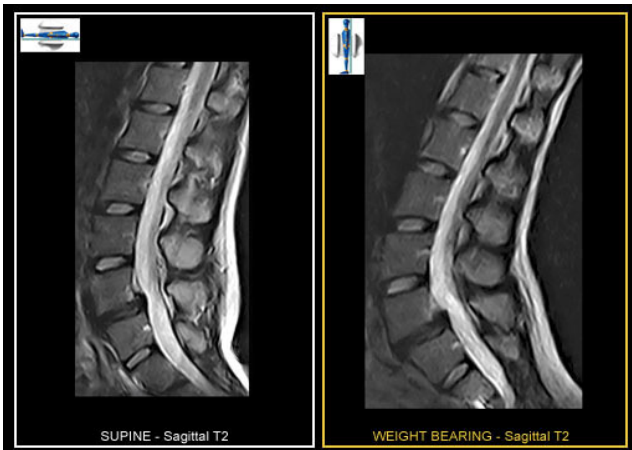
Ph: 0417 160 912





Weight Bearing MRI

Our MRI machine has the ability to perform scans while the patient is standing upright. This allows the practitioner to better assess the patients condition by seeing the effect of a persons own body weight on their spine. This differs to typical MRI machines which perform scans with the patient lying on their back, bearing little to no weight.



Which lumbar spine disorders gain more when studied in weight bearing condition?

Functional Imaging: Ability to scan in the specific position in which the patient feels pain

Enhancing of instabilities: reaching the origin and cause of neurological disorders, evaluating the instability of longitudinal or yellow ligaments, better understanding of instability of facet joints in case of arthritis

Enhancing stenosis behaviour: worsening or relieving

Enhancing disc conditions: better evaluation of real water content of nucleus pulposis inside the intervertebral disc, enhancing bulging, protrusion and prolapsed discs

Better understanding of biomechanical behaviour of the lesion

Better understanding of postural problems

Better post-surgical evaluation of tissues under load



Open MRI Design

Our MRI has a unique open design. This makes it much more comfortable and tolerable for patients with claustrophobia or anxiety to have an MRI scan.

Extremity Scanning

Our MRI is not limited to lumbar spinal scans. Imaging can also be done on the foot/ankle, knee, hip, T & C spine, Shoulder, Elbow, Hand/wrist, etc.

